



# Next Bridge

## Mineral wool Corporation



دارنده استاندارد ۸۱۱۶ از سازمان ملی استاندارد ایران

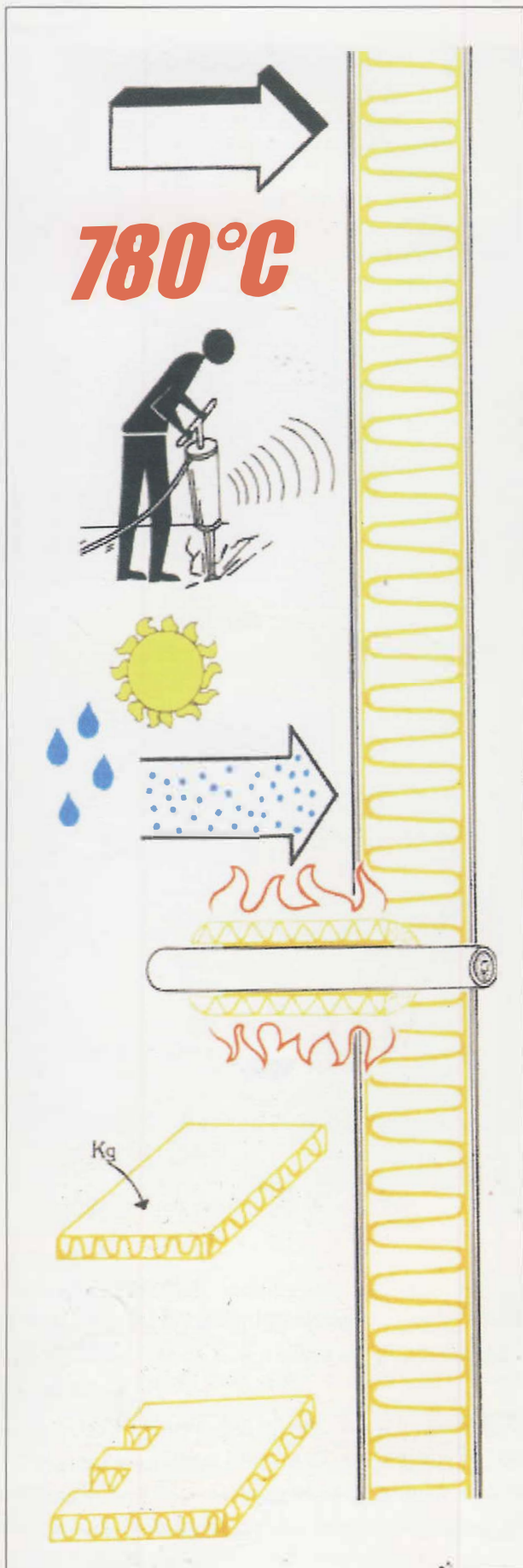
2017-2018



**NBEC Corporation**  
MINERAL WOOL

# Next Bridge

Mineral wool Corporation



Low thermal  
Conductivity

High temperature  
application

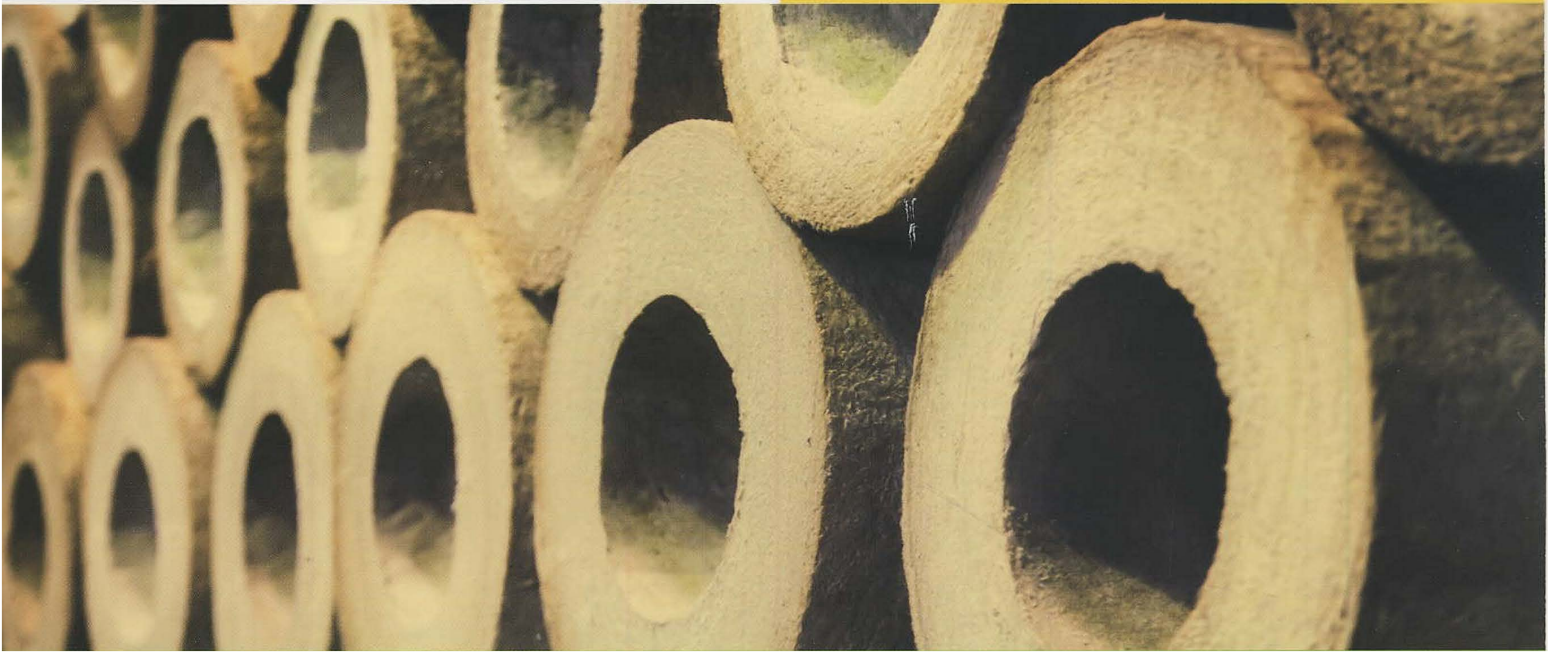
High sound  
absorption

Non-hygroscopic  
Water resistant  
Weather proof

Fire resistant  
Non-combustible  
Non-inflammable

Deformation resistant

Easy to handle  
Easy cutting  
Easy application  
Non-carcinogenic  
Imputrescible  
Non-Anti-corrosion



# Iso Pipe



(Insulation pipe)

Introduction:

This kind of insulator is made of raw wool together with a small quantity of resin which is used to form the yam during the cooking orocess, and is sent to market with various diameters (1.2 - 16 inches), thicknesses (25 - 100 mm) and densities (100 - 400 kg/m3), and with a length of 50 mm, aluminized with reinforced or plain aluminum coating or without any coating.

Features:

The most important features of this product include its effective stability against heat up to 650°C, appropriate acoustic and thermal insulation, easy installation, resistance to severe vibration, stable physical and chemical properties, etc.



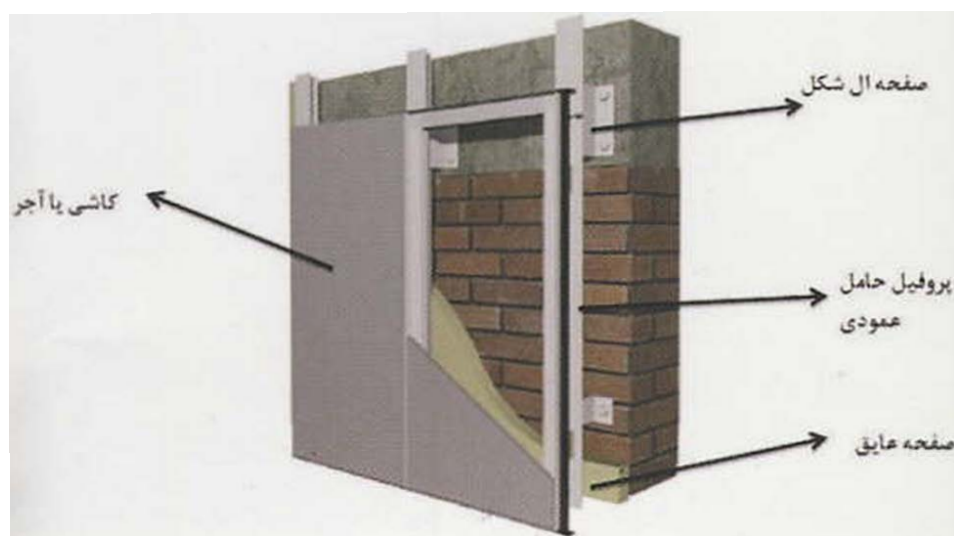
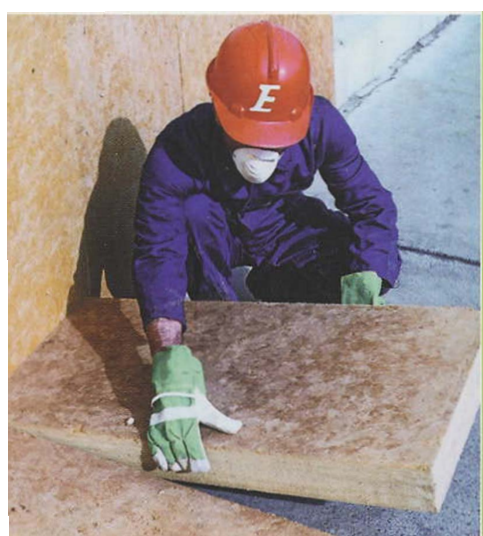
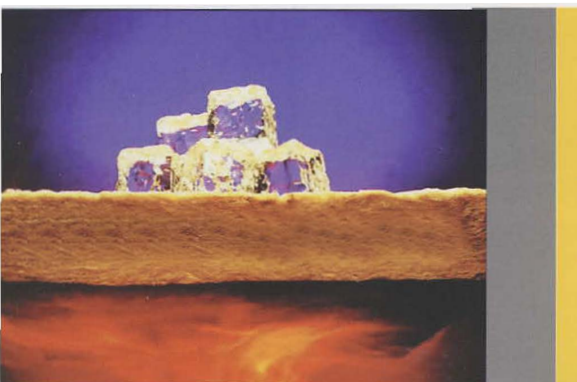
Application:

The most important applications of this product include insulation of hot and cold water pipes, heating and cooling systems, ventilation systems, and even cryogenics systems (working at very low temperatures). Besides, it is worth noting that this product has played a significant part in improving energy consumption and economizing in different industries such as oil; refinery and petrochemicals; power plants; steel, cement, and copper industries; industrial and domestic equipment, etc.

ASTM 0406	
maximum Application Temperature 650°C	
Size range :	1/2 -16 inches
Density Range :	100-140 kg/m³ ± 10
Thickness Range :	25-100mm
Length :	500mm
Packing :	Plastic



TARABGIN MINERAL WOOL





۸۱۱۶  
131621, 2008

### (Insulation Panel)

#### Introduction:

This panel has greater density than roll wool. Resinous wool has been used in making this insulator. The pressed using warm heavy-duty presses and sent to market as soft or middle hard screens depending on customer demands. Moreover, this product is manufactured in densities of 30-500 kg/m<sup>3</sup>, thicknesses of 20-75 mm, widths of 500-1000 mm, and lengths of 1000-1500 mm by this company.

#### Features:

The most important features of this product include its effective stability against heat up to a temperature of 50°C, effective role in energy waste reduction, optimal consistency, extensive applicability in industry and building thanks to its acoustic properties, durability, impeding the spread of fire, effective reduction of weight and volume of the structure, easy transportation, cutting, and installation, very high resistance to pressure, etc.

#### Application:

In buildings, in order to optimize internal and external spaces and reduce the structure weight, plaster and plasterboard walls and 3D panels, this product is used between partitions, under and over the concrete between the floors, on exterior surfaces and upper roofs (gable roofs), in recording studios and subway tunnels to absorb noise, prevent vibration transfer, construct sandwich panels, etc. Moreover, it is worth noting that these panels are mainly used in petrochemical complexes, refineries, power plants, shipbuilding and buoy making industries, airports and other industries.

Fonopanel products for Tarabegin company is anti humidity, which does not absorb humidity in the moisture places with direct contact.

ASTM 0406
maximum Application Temperature 450°C
Standard dimensions
width: 500-1000mm
length: 1000-1500mm changing dimensions depending on the order
Density Range : 30-500 kg/m <sup>3</sup>
Thickness Range : 20-100mm
Packing : Plastic



## Pheno Felt (Insulation Quilt)

### 1. Introduction:

In this product, wool containing phenolic resins (as a hybrid factor to improve mechanical stability) is used. It is marketed in the form of rolls and pieces (according to customer demand) with Al foil, craft wood, or reinforced or simple Al papers with a thickness tolerance of 25-75 mm, density of 30-60 kg/m<sup>3</sup>, a width of 95 mm and a length of 12 m.



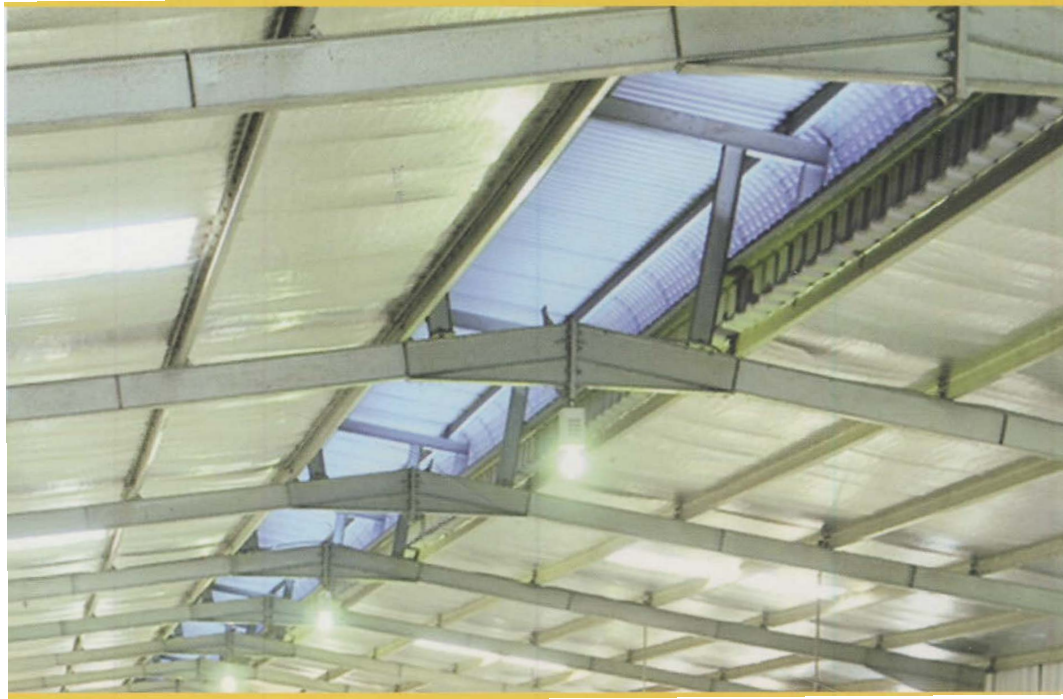
# Pheno Felt

## Features:

The important features of this product include effective stability against heat up to 450°C, flexibility, light weight, high resistance to the penetration of moisture into the insulation (in aluminized ones), economical for use in low temperatures (because of lamina craft and aluminum foil covers which contain some polyethylene), etc.

## Application:

The most significant applications of this product are in insulation and covering of false ceilings, ceilings of conference halls and industrial buildings, ventilation channels and ventilation systems, exhaust factories and cool water dispenses, home cooling and heating systems, etc.



## ASTM 0406

maximum Application Temperature 450°C

Standard dimensions

width: 950mm

length: depending on the customer order

This product is manufactured in two forms ,covered with Al foil or craft paper

Density Range : 30-60 kg/m<sup>3</sup>

Thickness Range : 25-75mm

Packing : Plastic



## ISO Blanket



## ISO Blanket (Insulation blanket stitched using a galvanized screen)

### Introduction:

In this product, raw wool is compacted into several layers and is then stitched to a warm rustproof screen by using an incombustible wire with 3.4 inch springs. Afterwards, it is sent to market with single-side or double-side screens covered with reinforced Al paper, Al foils, and craft wood.



### Features:

The most important features of this product include thermal limit and effective resistance to heat up to 950°C, stability against vibration (particularly in double-side screen cases), and tensile and bending strength which leads to high flexibility and easy installation. In addition, the greatest users of these products include oil and gas industries, refineries, petrochemicals, power plants, steel, and cement industries, auto industries, etc.

### application:

The product can be applied in insulating the flat and curved surfaces in industrial, large diameter pipes, kilns, hot houses, turbines and their exhausts. It also can be applied in insulating Tall chimneys, valves, flanges, boilers, fixed and portable tanks, and Insulating tar transport tank containers as well.

#### ASTM 0406

maximum Application Temperature 950°C

Standard dimensions

Width : 600-1000-1200mm

Length: 3000-6000mm

Density Range : 80-200 kg/m³

Thickness Range : 25-100mm

Packing : Plastic



# Iso Therm

## Isotherm (bulk raw wool)

### Introduction:

This type of wool is derived directly from the production line and is devoid of any hybrid factors. It is considered the base of other (insulation) products and is very suitable for use in insulation in areas with irregular dimensions.

### Features:

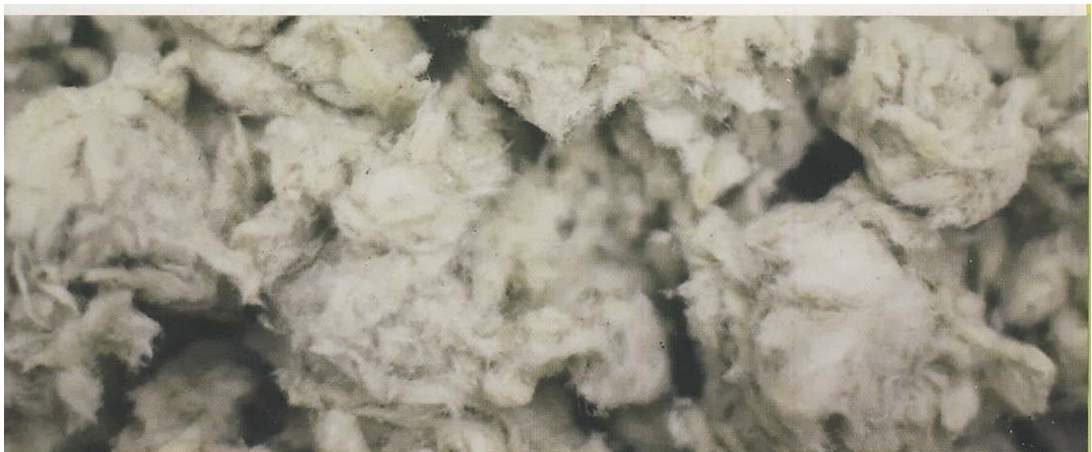
The most significant features of this product include ease of use and plasticity, thermal limit, effective resistance to heat up to 950°C, and chemical stability.



ASTM C 0406	
Application Temperature	950°C
Particular Weight	50 - 120 kg/m <sup>3</sup>
Types	Raw wool with resin
	Raw wool without resin
Packing	Raw wool batting 10 kg and 25 kg

### Application:

The applications include insulation of the space between building walls, between wooden doors, chimney walls, industrial equipment, light concrete, waterproofing, between furnace walls, etc. Moreover, sifted raw wool is a suitable and harmless substitute for asbestos in producing frictional devices such as clutch plates and brake pads of light and heavy vehicles.



# Rezin



## **Rezin:**

Phenolic base resins are another product of NBEC Company produced in a well-equipped workshop. At the present time, the equipment of this workshop includes resin-producing reactors, fully-automated and high-precision systems for transporting raw materials to the reactors in order to measure raw materials, chemical laboratories for measuring the indices of interest in the raw materials and the products.

1. Resin is used to shape the fiber initially produced in the production of materials such as Pheno Panel Isopipe and Pheno Felt for use in heat and sound insulators. After adding the resin to the initial fiber, in order to give consistency to the fiber, the product is cooked in a temperature of 250°C and a product with different degrees of compactness is produced.

2. Resol: This resin is used to make creek mud which is used on the bed of iron meting routes directed from the man pots. Creek mud is made of mineral compounds such as  $\text{TiO}_2\text{-CaO-MgO-Fe}_2\text{O}_3\text{-SiO}_2$  which are mixed with resol and get a paste-like shape. The resol produced by this company is produced with minerals with the above-mentioned quality, such that its main features are as follows:

1. Solid resin more than 60%

2. Remaining carbon more than 40%

3. A PH of 5.9-10

4. Viscosity in the Ford cap in 25°C is 120 sec. Other satisfactory features of the creek mud made of Tarabgin resol include stability in 600°C and 250°C, and porosity in 250°C and 600°C.

This company enjoys the required capability for providing the domestic markets' needs of industrial resins.





